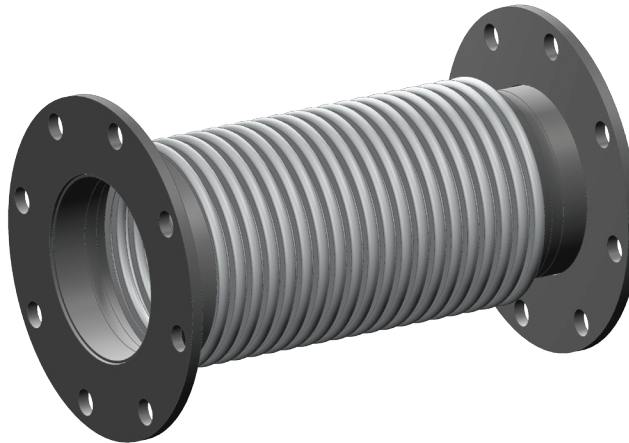


Flex Connectors

Corrugated Single-Ply Flex - Technical Specification

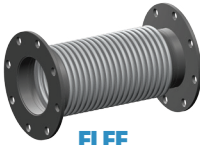


Nominal Hose ID	Nominal Hose OD	Max Lateral Offset	Max Axial Movement	Max Operating Temperature
(in)	(in)	(ft)	(ft)	(°F)
2	2.75	0.96	0.14	1500
2.5	3.17	0.82	0.22	1500
3	3.75	0.74	0.22	1500
4	4.82	0.60	0.22	1500
5	5.87	0.47	0.22	1500
6	6.94	0.42	0.22	1500
8	9	0.30	0.22	1500
10	11	0.20	0.22	1500
12	13	0.17	0.22	1500

- Flex is made of single-ply stainless steel annular hose. End connections are carbon steel (available in stainless steel).
- Maximum working pressure @ 1200°F is 5 PSIG. All tabulated movements are non-concurrent. Axial movements vary depending upon overall length.
- Single-ply flexes are not recommended by the manufacturer for applications requiring axial and lateral offset movement. Please refer to the Expansion Joint specification sheet.
- Dimensions and specifications may be subject to change without prior notification.
- Product images are for illustrative purposes only and may differ from the actual product.
- All flange bolt holes straddle the centerlines. All ANSI Flanges are 150# bolt pattern. Please see our flange catalog for details. All ANSI Flanges may be replaced with standard Caterpillar, Cummins, or MTU engine flanges.
- Any flange can be fixed or floating. Other configurations such as tube, pipe, NPT, etc. and their combinations are available upon request. Please contact Nett Technologies for details.

Flex Connectors

Corrugated Single-Ply Flex



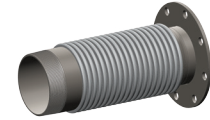
FLFF



FLTU



FLSO

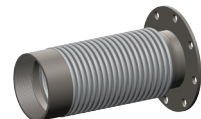


FLMN

ANSI to ANSI		ANSI to OD Tubing		ANSI to Slip-on		ANSI to Male NPT	
Part Number	Size (in)	Part Number	Size (in)	Part Number	Size (inches)	Part Number	Size (in)
FX-FLFF-02000	2	FX-FLTU-02000	2	FX-FLSO-02000	2	FX-FLMN-02000	2
FX-FLFF-02500	2.5	FX-FLTU-02500	2.5	FX-FLSO-02500	2.5	FX-FLMN-02500	2.5
FX-FLFF-03000	3	FX-FLTU-03000	3	FX-FLSO-03000	3	FX-FLMN-03000	3
FX-FLFF-03500	3.5	FX-FLTU-03500	3.5	FX-FLSO-03500	3.5	FX-FLMN-03500	3.5
FX-FLFF-04000	4	FX-FLTU-04000	4	FX-FLSO-04000	4	FX-FLMN-04000	4
FX-FLFF-05000	5	FX-FLTU-05000	5	FX-FLSO-05000	5	FX-FLMN-05000	5
FX-FLFF-06000	6	FX-FLTU-06000	6	FX-FLSO-06000	6	FX-FLMN-06000	6
FX-FLFF-08000	8						
FX-FLFF-10000	10						
FX-FLFF-12000	12						
FX-FLFF-14000	14						



FLPP



FLFN



PPPP



TUTU

ANSI to Plain Pipe		ANSI to Female NPT		Plain Pipe to Plain Pipe		OD Tube to OD Tube	
Part Number	Size (in)	Part Number	Size (in)	Part Number	Size (in)	Part Number	Size (in)
FX-FLPP-02000	2	FX-FLFN-02000	2	FX-PPPP-02000	2	FX-TUTU-02000	2
FX-FLPP-02500	2.5	FX-FLFN-02500	2.5	FX-PPPP-02500	2.5	FX-TUTU-02500	3
FX-FLPP-03000	3	FX-FLFN-03000	3	FX-PPPP-03000	3	FX-TUTU-03000	3
FX-FLPP-03500	3.5	FX-FLFN-03500	3.5	FX-PPPP-03500	3.5	FX-TUTU-03500	3.5
FX-FLPP-04000	4	FX-FLFN-04000	4	FX-PPPP-04000	4	FX-TUTU-04000	4
FX-FLPP-05000	5	FX-FLFN-05000	5	FX-PPPP-05000	5	FX-TUTU-05000	5
FX-FLPP-06000	6	FX-FLFN-06000	6	FX-PPPP-06000	6	FX-TUTU-06000	6
FX-FLPP-08000	8			FX-PPPP-08000	8		
FX-FLPP-10000	10			FX-PPPP-10000	10		

- Standard overall length: 18". Other lengths are available upon request.
- Flex is made of single-ply stainless steel annular hose. End connections are carbon steel (available in stainless steel).
- Dimensions and specifications may be subject to change without prior notification. Product images are for illustrative purposes only and may differ from the actual product.
- All ANSI Flanges are 150# bolt pattern. Please see our flange catalog for details. ANSI floating flanges, custom connections, and custom lengths to suit your application are available upon request. Please contact Nett Technologies for details.

Flex Connectors

Corrugated Single-Ply Flex



FNSO



SOSO



SOTU



MNSO

Female NPT to Slip-On		Slip-On to Slip-On		Slip-on to Tubing		Male NPT to Slip-on	
Part Number	Size (in)	Part Number	Size (in)	Part Number	Size (in)	Part Number	Size (in)
FX-FNSO-02000	2	FX-SOSO-02000	2	FX-SOTU-02000	2	FX-MNSO-02000	2
FX-FNSO-02500	2.5	FX-SOSO-02500	2.5	FX-SOTU-02500	2.5	FX-MNSO-02500	2.5
FX-FNSO-03000	3	FX-SOSO-03000	3	FX-SOTU-03000	3	FX-MNSO-03000	3
FX-FNSO-03500	3.5	FX-SOSO-03500	3.5	FX-SOTU-03500	3.5	FX-MNSO-03500	3.5
FX-FNSO-04000	4	FX-SOSO-04000	4	FX-SOTU-04000	4	FX-MNSO-04000	4
FX-FNSO-05000	5	FX-SOSO-05000	5	FX-SOTU-05000	5	FX-MNSO-05000	5
FX-FNSO-06000	6	FX-SOSO-06000	6	FX-SOTU-06000	6	FX-MNSO-06000	6



MNFN



MNTU



FNTU



MNMN

Male NPT to Female NPT		Male NPT to OD Tubing		Female NPT to OD Tubing		Male NPT to Male NPT	
Part Number	Size (in)	Part Number	Size (in)	Part Number	Size (in)	Part Number	Size (in)
FX-MNFN-02000	2	FX-MNTU-02000	2	FX-FNTU-02000	2	FX-MNMN-02000	2
FX-MNFN-02500	2.5	FX-MNTU-02500	2.5	FX-FNTU-02500	2.5	FX-MNMN-02500	2.5
FX-MNFN-03000	3	FX-MNTU-03000	3	FX-FNTU-03000	3	FX-MNMN-03000	3
FX-MNFN-03500	3.5	FX-MNTU-03500	3.5	FX-FNTU-03500	3.5	FX-MNMN-03500	3.5
FX-MNFN-04000	4	FX-MNTU-04000	4	FX-FNTU-04000	4	FX-MNMN-04000	4
FX-MNFN-05000	5	FX-MNTU-05000	5	FX-FNTU-05000	5	FX-MNMN-05000	5
FX-MNFN-06000	6	FX-MNTU-06000	6	FX-FNTU-06000	6	FX-MNMN-06000	6

- Standard overall length: 18". Other lengths are available upon request.
- Flex is made of single-ply stainless steel annular hose. End connections are carbon steel (available in stainless steel).
- Dimensions and specifications may be subject to change without prior notification. Product images are for illustrative purposes only and may differ from the actual product.
- All ANSI Flanges are 150# bolt pattern. Please see our flange catalog for details. ANSI floating flanges, custom connections, and custom lengths to suit your application are available upon request. Please contact Nett Technologies for details.